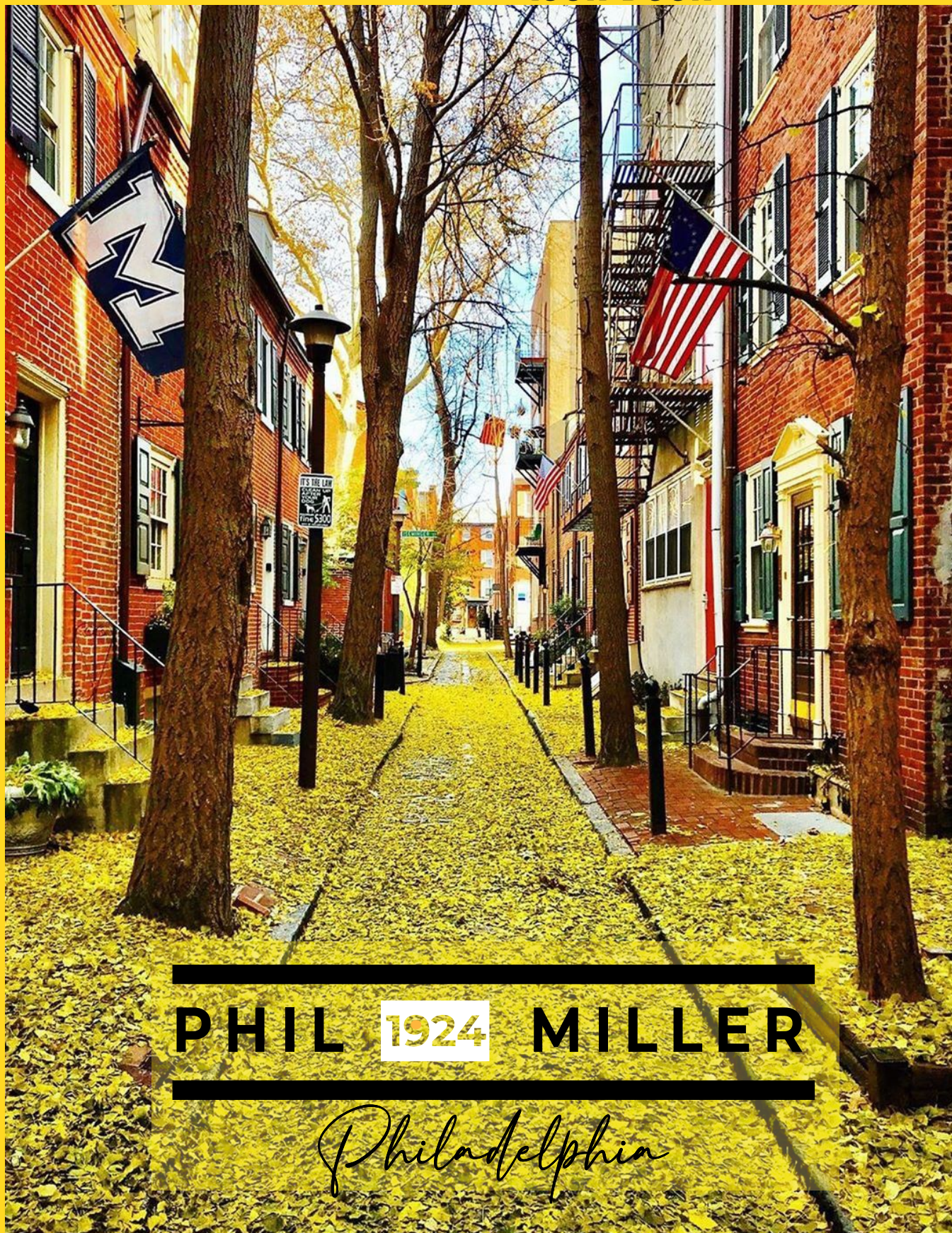


AW 24 25 look book



PHIL 1924 MILLER

*Philadelphia*







# PHM110

## FELPA CON CAPPuccio E ZIP

- \*FELPA 300 GR BRUSHED
- \*INTERNO CAPPuccio FODERATO IN COTONE JERSEY
- \*STAMPA SU POLSINO E DIETRO
- \* LOGO RICAMATO
- \*TASCHE FRONTALI CON ZIP

SIZE  
S 3XL



**BLK 003**



**MILITARY 002**



**DENIM 004**

**PHIL MILLER AW 24 25**

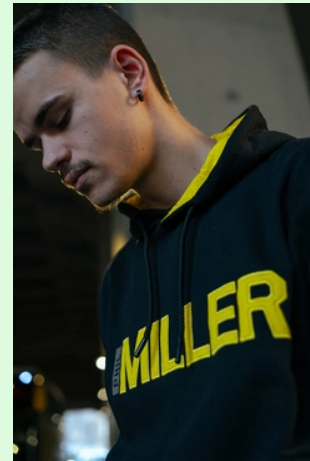
**003**

# PHM106

# FELPA CON CAPPuccio

- \*FELPA 300 GR BRUSHED
- \*INTERNO CAPPuccio FODERATO IN COTONE JERSEY
- \*STAMPA SU POLSINO E DIETRO
- \* LOGO GRANDE INSERTATO
- \*TASCHE FRONTALI APERTE

SIZE  
S 3XL



**MILITARY 002**



**WHT 012**



**BLK 003**

# PHIL MILLER AW 24 25

004

# PHM116

## FELPA GIROCOLLO

\*FELPA 300 GR BRUSHED

\*STAMPA SU POLSINO E DIETRO

\* LOGO PATCH

\*TASCA DI SICUREZZA NASCOSTA  
LATO DX

SIZE  
S 3XL



**MILITARY 002**



**DENIM 040**



**BLK 003**

**PHIL MILLER AW 24 25**

**005**

# PHM260

# FELPA CON CAPPuccio

\*FELPA 300 GR BRUSHED

\*STAMPA SU POLSINO E DIETRO

\* LOGO MILLER RICAMATO GRANDE

SIZE  
S 3XL



**GR. MEL.2 020**



**DENIM 040**



**VIOLA CHIARO MEL.041**

# PHIL MILLER AW 24 25

006

# PHM300

# FELPA CON CAPPuccio

\*FELPA 300 GR BRUSHED

\*INTERNO CAPPuccio FODERATO IN COTONE JERSEY

\*TASCA MARSUPIO APERTA

\* STAMPA FRONTALE

SIZE  
S 3XL

**BLK**  
**003A**



**OFF WHT**  
**022A**



**FANGO**  
**042A**



**NAVY**  
**001A**



**PHIL MILLER AW 24 25**

**007**



# PHM300

# FELPA CON CAPPuccio

- \*FELPA 280 GR BRUSHED
- \*INTERNO CAPPuccio FODERATO IN COTONE JERSEY
- \*TASCA MARSUPIO APERTA
- \* STAMPA FRONTALE

SIZE  
S 3XL

**BLK**  
**003B**



**OFF WHT**  
**022B**



**FANGO**  
**042B**



**NAVY**  
**001B**



**PHIL MILLER AW 24 25**

**008**

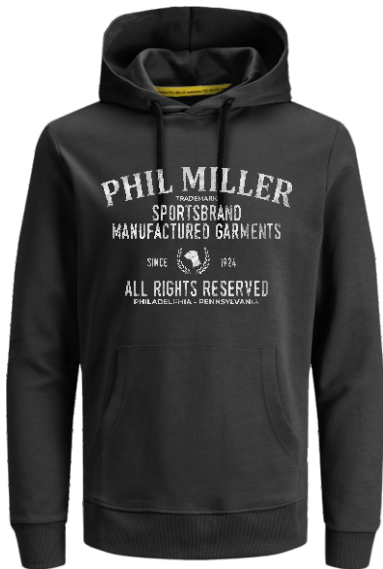
# PHM300

# FELPA CON CAPPuccio

- \*FELPA 300 GR BRUSHED
- \*INTERNO CAPPuccio FODERATO IN COTONE JERSEY
- \*TASCA MARSUPIO APERTA
- \* STAMPA FRONTALE

SIZE  
S 3XL

**BLK**  
**003C**



**OFF WHT**  
**022C**



**FANGO**  
**042C**



**NAVY**  
**001C**



**PHIL MILLER AW 24 25**

**009**

# PHM111

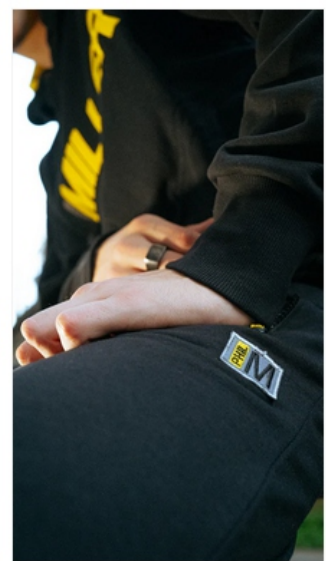
## PANTALONE LUNGO POLSINO

- \*FELPA 300 GR BRUSHED
- \*STAMPA SU RETRO VITA
- \* LOGO PATCH
- \*TASCHE IN VITA CON ZIP PRESOFUSE
- \*TASCHINA RETRO CON ZIP

SIZE  
S 3XL



**BLK 003**



**PHIL MILLER AW 24 25**

**010**

# PHM205

# T SHIRT MILLER

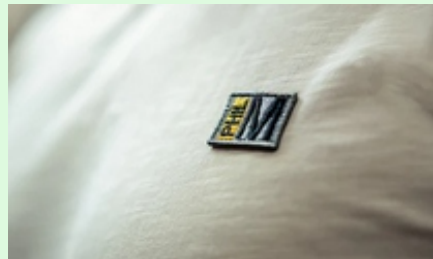
\*TESSUTO: 100% COTONE JERSEY KAMMATO

\*PATCH LOGO MILLER

\*ETICHETTA TESSUTA LOGO

\*STAMPA RETRO

SIZE  
S 3XL



**BLK 003**



**WHT 012**



**NAVY 013**

**PHIL MILLER AW 24 25**

**011**

# PHM290

## T SHIRT MANICA CORTA

\*TESSUTO: 100% COTONE JERSEY

160GR FIAMMATO

\* LOGO STAMPATO

SIZE  
S 3XL



**WHT 012**



**DENIM 040**



**BLK 003**

**PHIL MILLER AW 24 25**

**012**

# PHM306

## T SHIRT MANICA CORTA

\*TESSUTO: 100% COTONE JERSEY

160GR

\* LOGO STAMPATO

SIZE  
S 3XL

**NAVY**  
**001A**



**BLK**  
**003A**



**WHT**  
**012A**



**PHIL MILLER AW 24 25**

**013**

# PHM306

## T SHIRT MANICA CORTA

\*TESSUTO: 100% COTONE JERSEY

160GR

\* LOGO STAMPATO

SIZE  
S 3XL

**NAVY**  
**001B**



**BLK**  
**003B**



**WHT**  
**012B**



**PHIL MILLER AW 24 25**

**014**

# PHM306

## T SHIRT MANICA CORTA

\*TESSUTO: 100% COTONE JERSEY

160GR

\* LOGO STAMPATO

SIZE  
S 3XL

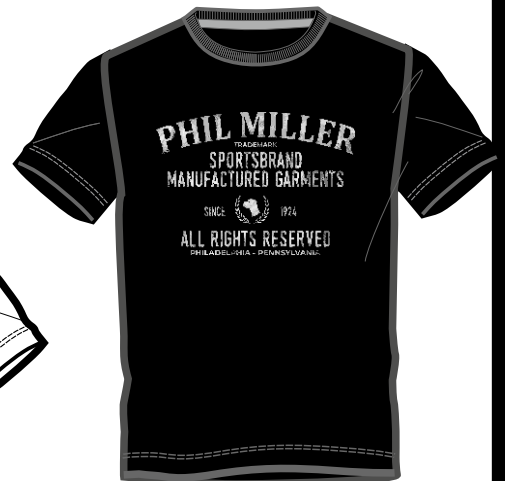
**NAVY**  
**001C**



**WHT**  
**012C**



**BLK**  
**003C**



**PHIL MILLER AW 24 25**

**015**



# PHM242

## T SHIRT MANICA CORTA

\*TESSUTO: 100% COTONE JERSEY

160GR FIAMMATO

\*GRAFICA FRONTALE FUORISTRADA MILLER

\*ETICHETTA TESSUTA LOGO

SIZE  
S 3XL



**BLK 015**



**GREY MEL1 010**

**PHIL MILLER AW 24 25**

**016**

# PHM197

## T SHIRT MANICA CORTA LOGO ISTITUZIONALE

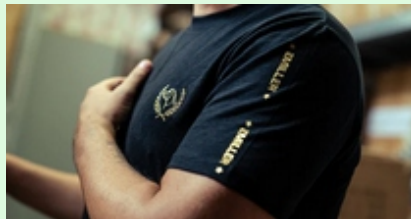
**\*TESSUTO: 100% COTONE JERSEY**

**160GR FIAMMATO**

**\*STAMPA RIPETITIVA GOLD SU MANICHE**

**\*ETICHETTA TESSUTA LOGO**

SIZE  
S 3XL



**BLK 015**



**NAVY 013**

**PHIL MILLER AW 24 25**

**017**

# PHM310

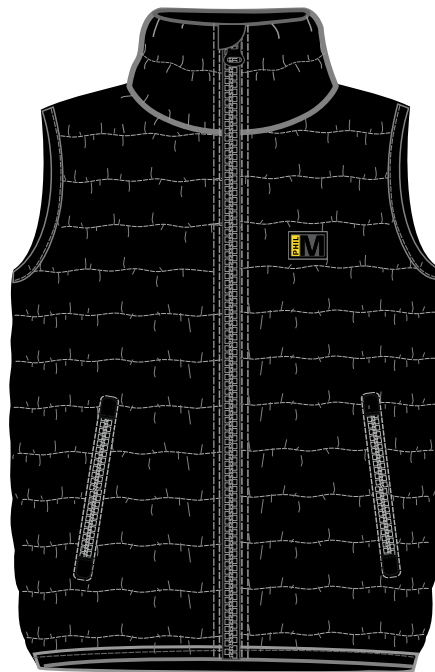
# SMANICATO

LOGO MILLER PATCH ALTA DEFINIZIONE  
ESTERNO NYLON  
INTERNO IMBOTTITO IN PIUMA ECOLOGICA  
ZIP PRESSOFUSE  
TASCHINA INTERNA CON VELCRO

SIZE  
S 3XL



**NAVY 001**



**BLK 003**

**PHIL MILLER AW 24 25**

**018**

# PHM304

# SCUBA

**LOGO MILLER PATCH ALTA DEFINIZIONE**

**ESTERNO POLIESTERE ELASTICIZZATO**

**RETRO IN MICROPILE (NON FODERATO)**

**ZIP WATERPROOF**

**TASCHINA INTERNA DI SICUREZZA**

**POLSO REGOLAB. CON VELCRO**

SIZE  
S 3XL



**BLK 003**

**NAVY 001**

**PHIL MILLER AW 24 25**

**019**

# PHM145

## SOFTSHELL IMBOTTITO LUNGO

**MULTI TASCHE ESTERNE + SAFETY POCKET INTERNA X SMARTPHONE**

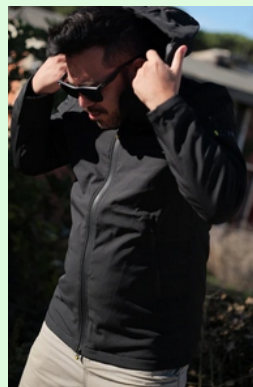
\*ESTERNO 100% POLYESTER ELASTICIZZATO

\*INTERNO IN PIUMA ECOLOGICA

\*ZIP WATERPROOF

**LOGO IN ALTA DEFINIZIONE**

SIZE  
S 3XL



**DARK GREY 006**



**NAVY 013**



**BLK 003**

**PHIL MILLER AW 24 25**

**020**

# PHM308

# AVIATORE

LOGO MILLER PATCH ALTA DEFINIZIONE

ESTERNO IN POLIESTERE

INTERNO TRAPUNTATO IMBOTTITO IN PIUMA ECOLOGICA

ZIP WATERPROOF

TASCHINA INTERNA DI SICUREZZA

SIZE  
S 3XL



**MILITARY 002**

**BLK 003**

**PHIL MILLER AW 24 25**

**021**

# PHM264

# ULTRALIGHT

**LOGO MILLER PATCH ALTA DEFINIZIONE**

- \*ESTERNO 100% NYLON
- CON INSERTO SPALLA IN TESSUTO TECNICO
- \*INTERNO IN PIUMA ECOLOGICA
- \*ZIP TANK (PRESSOFUSA)



SIZE  
S 3XL



**DENIM 040**



**RED 032**



**MILITARY 002**

**PHIL MILLER AW 24 25**

**022**

# PHM267

# IMPERMEABILE

LOGO MILLER PATCH ALTA DEFINIZIONE

\*ESTERNO NYLON TASLON CON BUONA IMPERMEABILITA'

\*INTERNO IN PIUMA ECOLOGICA E PILE

\*ZIP TANK ( PRESSOFUSE)

\*TASCHINA INTERNA DI SICUREZZA

SIZE  
S 3XL

L=87.0 CM



**BLK 003**



**MILITARY 002**



**NAVY 013**

**PHIL MILLER AW 24 25**

**023**



# PHM309

# PIUMINO ECO

LOGO MILLER PATCH ALTA DEFINIZIONE

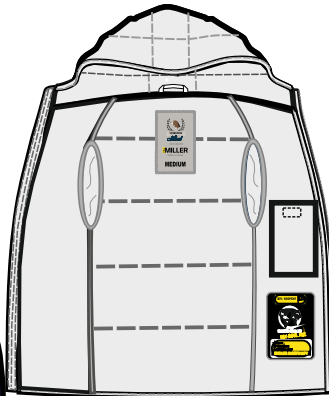
ESTERNO NYLON

INTERNO TRAPUNTATO IMBOTTITO IN PIUMA ECOLOGICA

ZIP PRESSOFUSE

TASCHINA INTERNA DI SICUREZZA

SIZE  
S 3XL



**NAVY 001**



**MILITARY 002**



**BLK 003**

**PHIL MILLER AW 24 25**

**024**

**PHM185**

**ZUCCOTTO**

**\* 100% POLY**

**SIZE  
UNICA**



**BLK 003**



**NAVY 013**



**GREY MEL. 2 020**

**PHIL MILLER AW 24 25**

**025**



@philmillerofficial

PHILMILLER.IT

