

A man with curly hair, wearing a black t-shirt, dark shorts, black socks, and orange and black running shoes, is captured in a dynamic running pose on a rocky, uneven trail. He is looking forward with a focused expression. The background features lush green trees and a clear sky. The overall scene conveys a sense of outdoor fitness and adventure.

ATOM

SS25

MATRIXATOM · TRAIL

- TECHNICAL FIELD +



SHARK TRAIL
DROP 6MM · 360-310 GR



K4
DROP 6MM · 320-270 GR



TERRA 2.0
DROP 8MM · 322-265 GR



TERRA MAX
DROP 6MM · 310-280 GR

S H O R T

M I D D L E

L O N G



TRAIL RUNNING



SHARK TRAIL

IN THE MOUNTAINS AND VALLEYS
THE SHARK TRAIL
ATCM

K4 TRAIL

YOU'RE RUNNING FOR A REASON. NOTHING WILL STOP YOU.
TACKLE COMPLEX TERRAIN

DROP	6 mm	Stud Height	4,5 mm
Material	Textil	Men's Weight	320 gr.
External profile	39-29 mm	Women's Weight	270 gr.
Inner profile	27-21 mm			

EXTERNAL QUICK-FIT

External quick-fit heel pull allows the shoe to be pulled on more easily



UPPER

Abrasion resistant and breathable mesh with TPU reinforcements. High breathability keeps feet dry and comfortable. Padded collar and extreme heel cup for safety and security

SOLE

Features ATOM GRIP, a high performance compound that ensures great grip. Bi-directional 4.5 mm lugs ensure grip on both uphill and steep descents

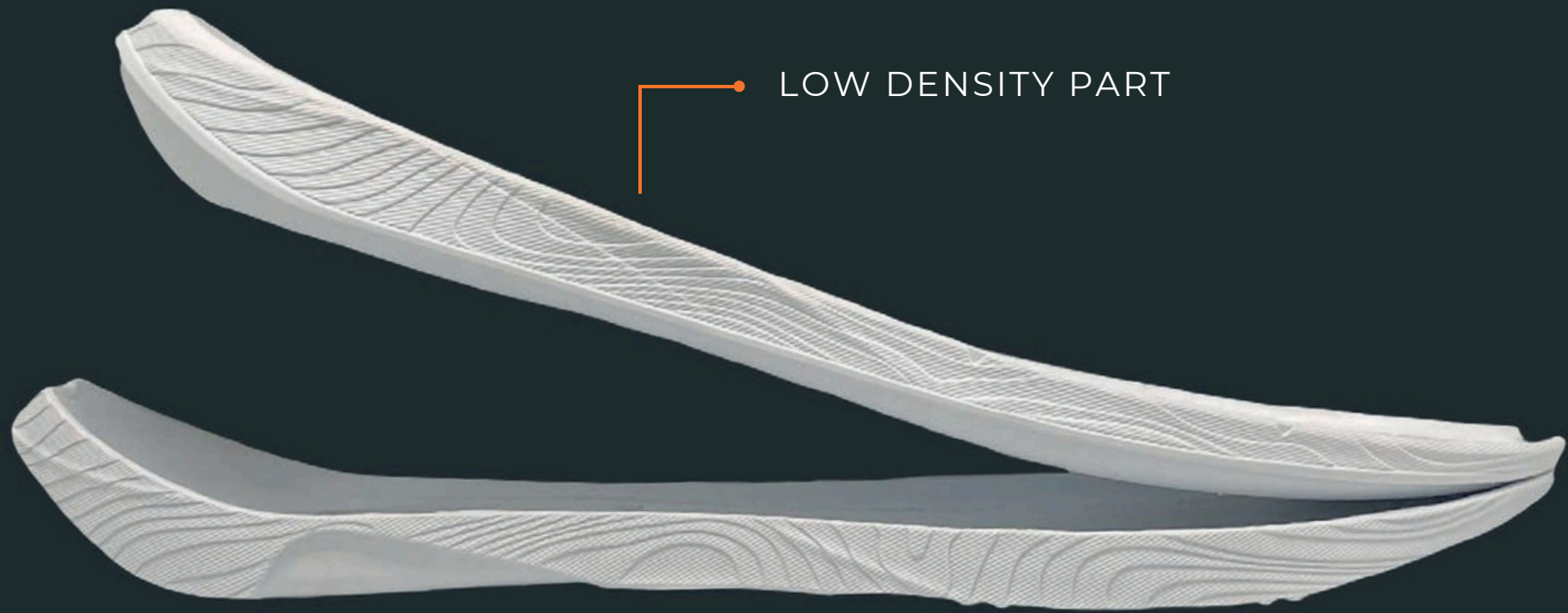


PROTECTIVE TOE CAP TPU toe cap absorbs impact, offering protection against rocks, branches and other terrain hazards

1. Bi-Density midsole that helps cushion the foot on uneven terrain. Strategically designed with different materials to provide both cushioning and rigidity
2. Suitable for all types of terrain. Designed to withstand different weather conditions thanks to their quick-drying design, and great breathability that keeps feet at a pleasant temperature
3. Flexible strap perfect for storing laces to prevent them from causing any problems during competition or demanding training sessions.

BI-DENSITY

The Bi-Density midsole helps to cushion the foot on uneven terrain. Strategically designed with different materials to provide both cushioning and rigidity. The high density part of the midsole provides support and protection while the low density part provides great comfort and makes the stride softer



LOW DENSITY PART

HIGH DENSITY PART

INNER SOLE RUBBER

The inner sole rubber has a softer density for increased traction



OUTER SOLE RUBBER

The outer sole rubber has a higher density that increases the shoe's durability

ATOM GRIP

It features ATOM GRIP, a high performance compound that guarantees great grip. The bi-directional 4.5mm lugs guarantee grip on both climbs and steep descents.

Designed to provide maximum grip, minimum weight, and optimum stability on uneven terrain



TRAIL RUNNING SS25 · MEN

K4 TRAIL

Drop: 6mm · Weight: 320 gr



AT166 K4 TRAIL RUN BLACK



AT166 K4 TRAIL RUN ORANGE



AT166 K4 TRAIL RUN LAKE



AT166 K4 TRAIL RUN ALL BLACK



AT166 K4 TRAIL RUN GREEN



AT166 K4 TRAIL RUN BLUE

TRAIL RUNNING SS25 · WOMEN

K4 TRAIL

Drop: 6mm · Weight: 270 gr



AT167 K4 TRAIL RUN WHITE



AT167 K4 TRAIL RUN BLACK



AT167 K4 TRAIL RUN SKYBLUE



AT167 K4 TRAIL RUN ALL BLACK



AT167 K4 TRAIL RUN CIAN



AT167 K4 TRAIL RUN ORANGE



AT167 K4 TRAIL RUN LIGHT



TERRA 2.0

CHOOSE YOUR ROUTE AND FIND YOUR PEAK. THIS TRAIL RUNNING SHOE ALLOWS YOU TO RUN IN DRY OR WET TERRAIN.

DROP	8 mm	Stud Height	4.5 mm
Material	Textil	Men's Weight	321 gr.
External profile	43-26 mm	Women's Weight	265 gr.
Inner profile	26- 18 mm			

TRAIL RUNNING

TERRA 2.0

MIDSOLE

Its midsole is designed with Low Density (LD) technology to increase the levels of cushioning, reactivity and lightness.

UPPER

Specially designed mesh for comfort and durability. High breathability to keep feet dry and comfortable even when walking long distances in adverse conditions

SOLE

Featuring ATOM GRIP, a high level grip and durability system with 4.5mm lugs, inspired by the Enduro Extreme tire. Peak performance and responsiveness to terrain

PROTECTIVE TOE CAP

Using protection against rocks, branches and other terrain hazards



1. To provide consistent heel protection, this model includes stabilizers that make the shoe more solid over distances and ensures correct biomechanics
2. DoubleFoam is a lightweight material that helps to cushion the foot on uneven terrain. Strategically designed using different materials that provide cushioning and energy to the foot. The hindfoot area absorbs heel impact more effectively while the forefoot improves rebound
3. External quick-fit heel puller to allow the shoe to fit much more easily and the lacing area is protected by TPU

MR74



This shoe was designed in collaboration with **Mario Roman**, the Extreme Enduro world champion. Enduro and Trail unite to create a shoe that guarantees maximum grip

LINK TO VIDEO:



ATOM

DEED



ATOM GRIP

Featuring ATOM GRIP, a high level grip and durability system with 4.5mm lugs inspired by the Enduro Extreme tire

The sole is composed of chloroprene (a material used in climbing shoes), which allows for exceptional grip performance

The pyramid shaped lugs are designed to minimize mud and dirt retention, ensuring maximum grip

FLEXORS

Flexors are bi-directional cuts that increase flexibility and adaptability.

The brand's R+D+I department has included these elements in the metatarsal part of the forefoot for even greater benefits.

TRAIL RUNNING SS25 · MEN

TERRA 2.0

Drop: 8mm · Weight: 321 gr



AT158 TERRA V2 LOW DENSITY BLACK



AT158 TERRA V2 LOW DENSITY ORANGE



AT158 TERRA V2 LOW DENSITY BLUE



AT158 TERRA V2 LOW DENSITY FLUOR



AT158 TERRA V2 LOW DENSITY GREEN



AT158 TERRA V2 LOW DENSITY ALL BLACK



AT158 TERRA V2 LOW DENSITY LAKE

TRAIL RUNNING SS25 · WOMEN
TERRA 2.0

Drop: 8mm · Weight: 265 gr



AT159 TERRA V2 LOW
DENSITY WHITE



AT159 TERRA V2 LOW
DENSITY BLACK



AT159 TERRA V2 LOW
DENSITY ORANGE



AT159 TERRA V2 LOW
DENSITY CIAN



AT159 TERRA V2 LOW DENSITY SKYBLUE



AT159 TERRA V2 LOW
DENSITY LIGHT



AT159 TERRA V2 LOW
DENSITY ALL BLACK



TERRA MAX

MOUSSE MAX ENDURO



AIR GRID IMPACT

TERRA MAX

HANDLES THE MOST DEMANDING TRAILS. FEATURING A LIGHTWEIGHT DESIGN AND MAXIMUM COMFORT

DROP	6 mm	Stud Height	5 mm
Material	Textil	Men's Weight	310gr.
External profile	44-36 mm	Women's Weight	280gr.
Inner profile	32-26 mm			



MR74

This shoe was designed in collaboration with **Mario Roman**, the Extreme Enduro world champion. Enduro and Trail unite to create a shoe that guarantees maximum grip

DESC



ATOM GRIP

Featuring ATOM GRIP, a high level grip and durability system with 4.5mm lugs inspired by the Enduro Extreme tire

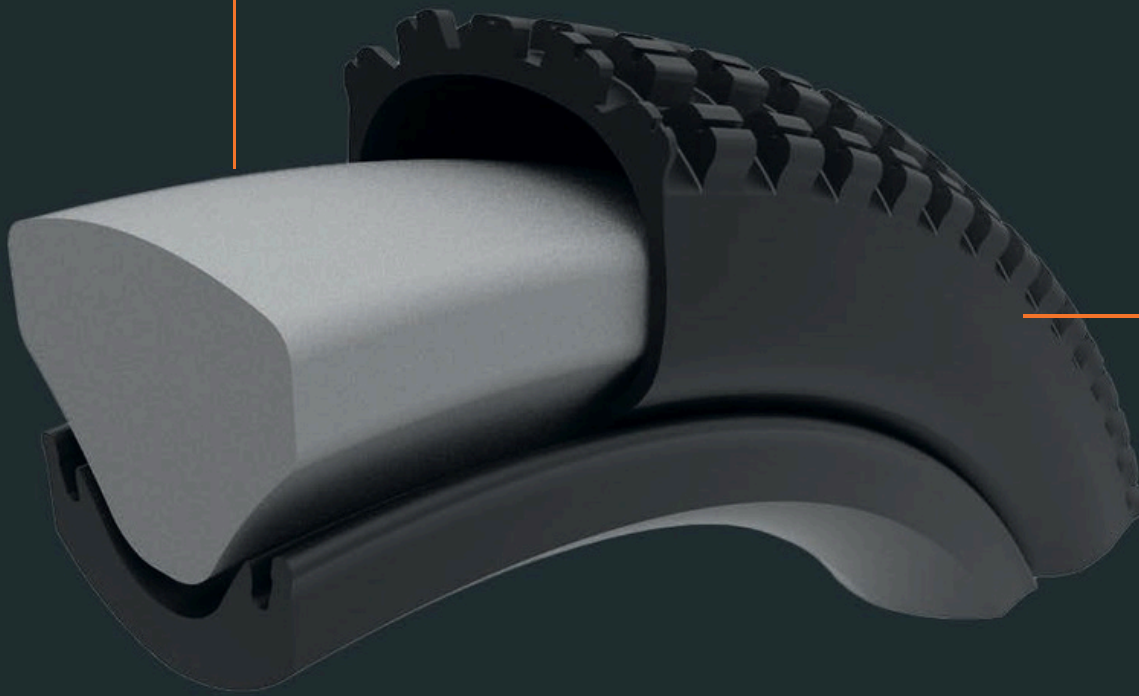
The sole is composed of chloroprene (a material used in climbing shoes), which allows for exceptional grip performance

The pyramid shaped lugs are designed to minimize mud and dirt retention, ensuring maximum grip



TRAIL RUNNING SS25 | TERRA MAX

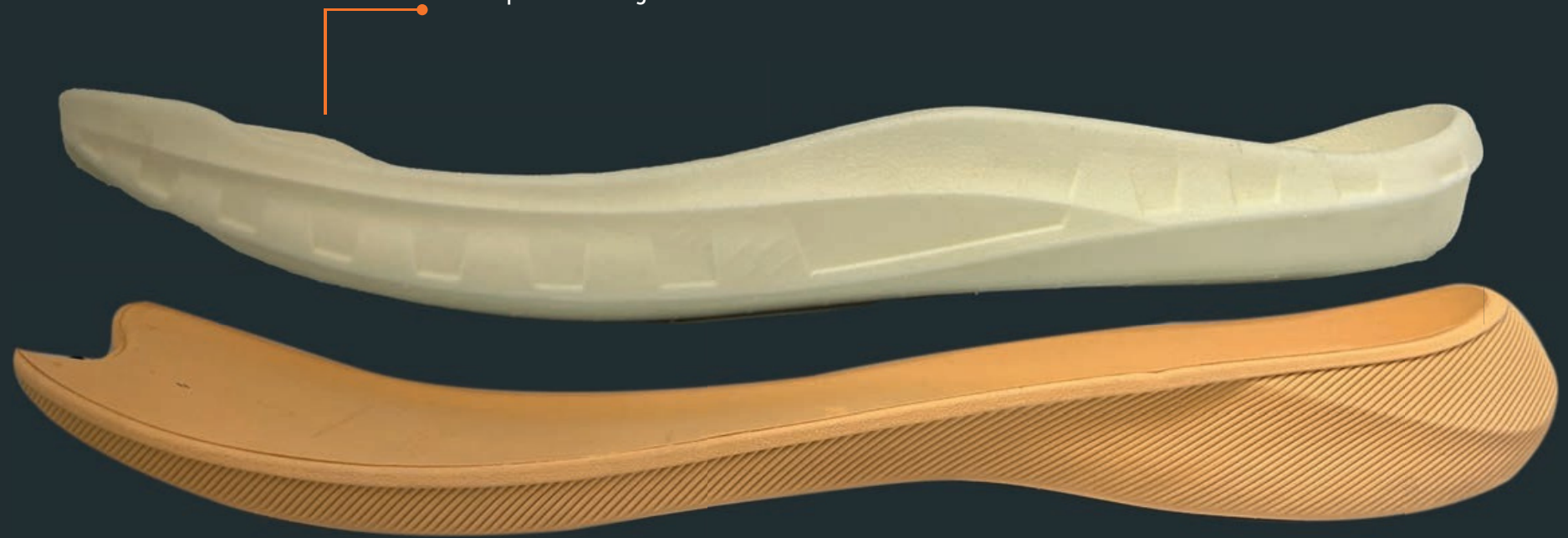
MIDSOLE



SOLE

CUSHIONING: MOUSSE MAX

Provides maximum comfort and a soft landing to reduce impact on joints



REACTION AND PROTECTION

Better response at toe-off and protection on contact with the ground

TRAIL RUNNING SS25 · MEN
TERRA MAX

Drop: 6mm · Weight: 310 gr



AT179 TERRA MAX NITRO BLUE



AT179 TERRA MAX NITRO GREEN



AT179 TERRA MAX NITRO ORANGE



AT179 TERRA MAX NITRO WHITE BLUE



AT179 TERRA MAX NITRO SAND



AT179 TERRA MAX NITRO BLACK

TRAIL RUNNING SS25 · WOMEN
TERRA MAX

Drop: 6mm · Weight 280 gr



AT180 TERRA MAX NITRO
WHITE



AT180 TERRA MAX NITRO
BLUE



AT180 TERRA MAX NITRO
SAND



AT180 TERRA MAX NITRO
ROSE



AT180 TERRA MAX NITRO CIAN

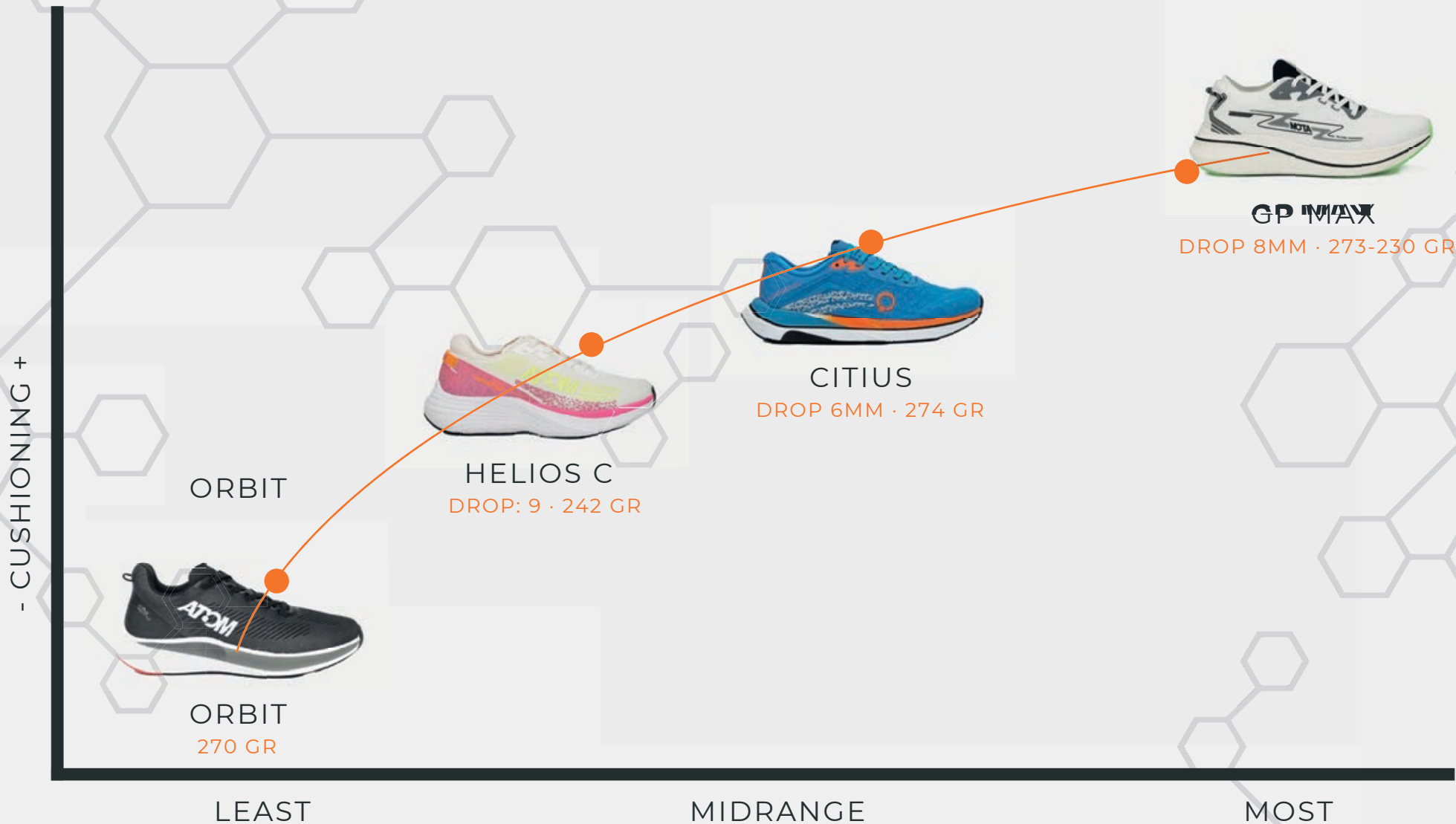


AT180 TERRA MAX NITRO
BLACK



R U N N I N G

MATRIXATOM · RUNNING





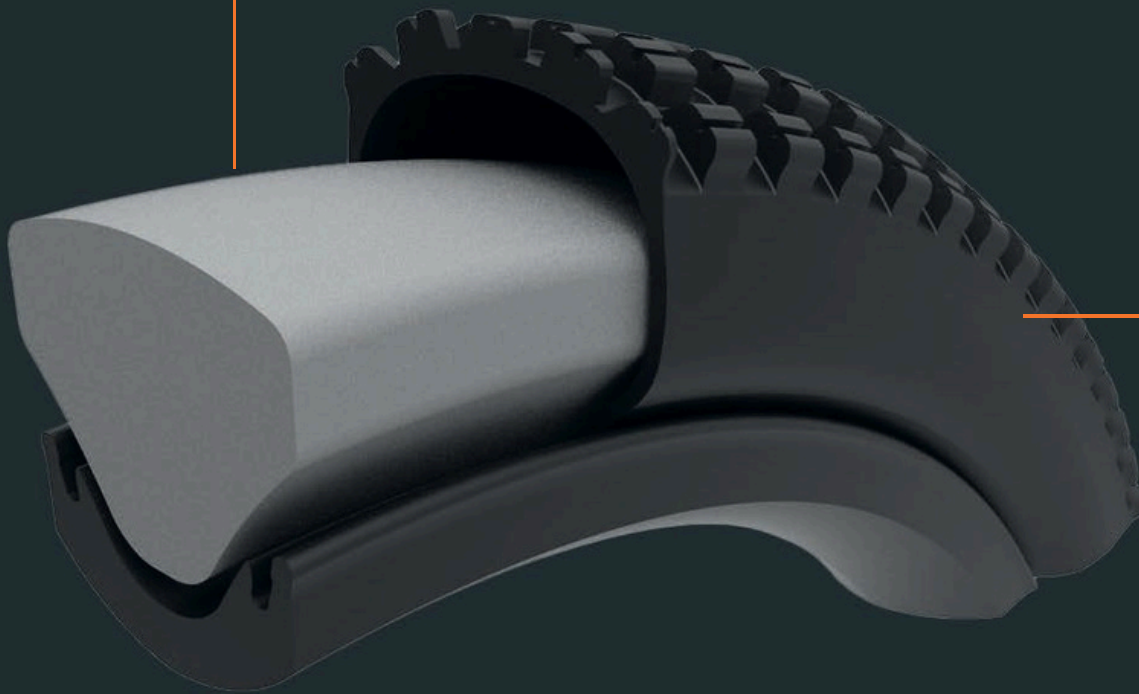
GP MAX

EPIC ENERGY.

UNLEASH YOUR FULL POTENTIAL

DROP	8 mm	Men's Weight	273 gr.
Material	Knit	Women's Weight	230 gr.
External profile	51-35 mm			
Inner profile	35-27 mm			

MIDSOLE



SOLE

SOLE

Material developed in conjunction with MOUSSE MAX racing motorcycles technology for increased absorption and propulsion

KNIT SETTING

Thanks to the new elastic tongue collar design, the shoe is easier to put on and take off and adapts better to the foot.



RTPU

RTPU thermoplastic rubber technology for lighter weight and good grip

RUNNING SS25 · MEN

GP MAX

Drop: 8 Weight: 273 gr.



AT177 MOUSSE FOAM BLACK



AT177 MOUSSE FOAM SAND



AT177 MOUSSE FOAM BLUE



AT177 MOUSSE FOAM AQUA



AT177 MOUSSE FOAM WHITE

RUNNING SS25 · WOMEN

GP MAX

Drop: 8

Weight: 230 gr.



AT178 MOUSSE FOAM BLACK



AT178 MOUSSE FOAM SALMON



AT178 MOUSSE FOAM SKYBLUE



AT178 MOUSSE FOAM AQUA



AT178 MOUSSE FOAM WHITE



CITIUS

REACH YOUR TOP SPEED. WHETHER IT'S TO BEAT YOUR BEST TIME
OR TO GET ON THE PODIUM.

DROP	6 mm	Men's Weight	273 gr.
Material	Textil			
External profile	39-29 mm			
Inner profile	27-21 mm			

RUNNING SS25 · WOMEN

CITIUS

Drop: 6 Weight: 273 gr



AT164 CITIUS RUN OCEAN



AT164 CITIUS RUN ALL BLACK



AT164 CITIUS RUN BLACK
WHITE



AT164 CITIUS RUN WHITE BLACK

OUTSOLE

Outsole with specific tread pattern for better grip, adherence and stability

UPPER

Breathable, super lightweight, seamless mesh for maximum airflow. Strategically adapts to the natural movement of the foot creating a personalized fit that holds up under all circumstances and at all times.



MIDSOLE Low Density In

Gravity (LDI) midsole technology provides ATOM's unique cushioning.



A D V E R T I S I N G

ADVERTISING SS25



EX120 EXPOSITOR TORRE ATOM-SPORT



EX121 DISPLAY ATOM-SPORT

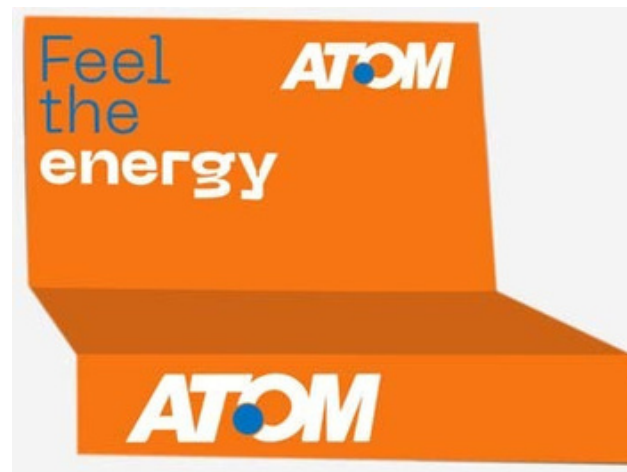


BANDERAS

ADVERTISING SS25



EX123 ROLL-UP ATOM-SPORT



EX123 CUBRE-BALDA ATOMSPORT



Exclusive Italian distributor for ATOM

Site: Oderzo (TV), Italy

VAT number: 05428620263

Phone number: +39 327 175 54 97

Email: info@bu-sport.com

B2C and B2B sites: www.bu-sport.com e www.b2b.bu-sport.com

Social references:

IG - <https://www.instagram.com/busport.italia/>

FB - <https://www.facebook.com/bu.sport.italia>

ATOM